

# Third Grade

Art Vistas introduces students to fine prints on the subjects of

## People

### ... and Their Feelings

We made Moody Clown Oil Pastels



*The Shrimp Girl*  
by Hogarth

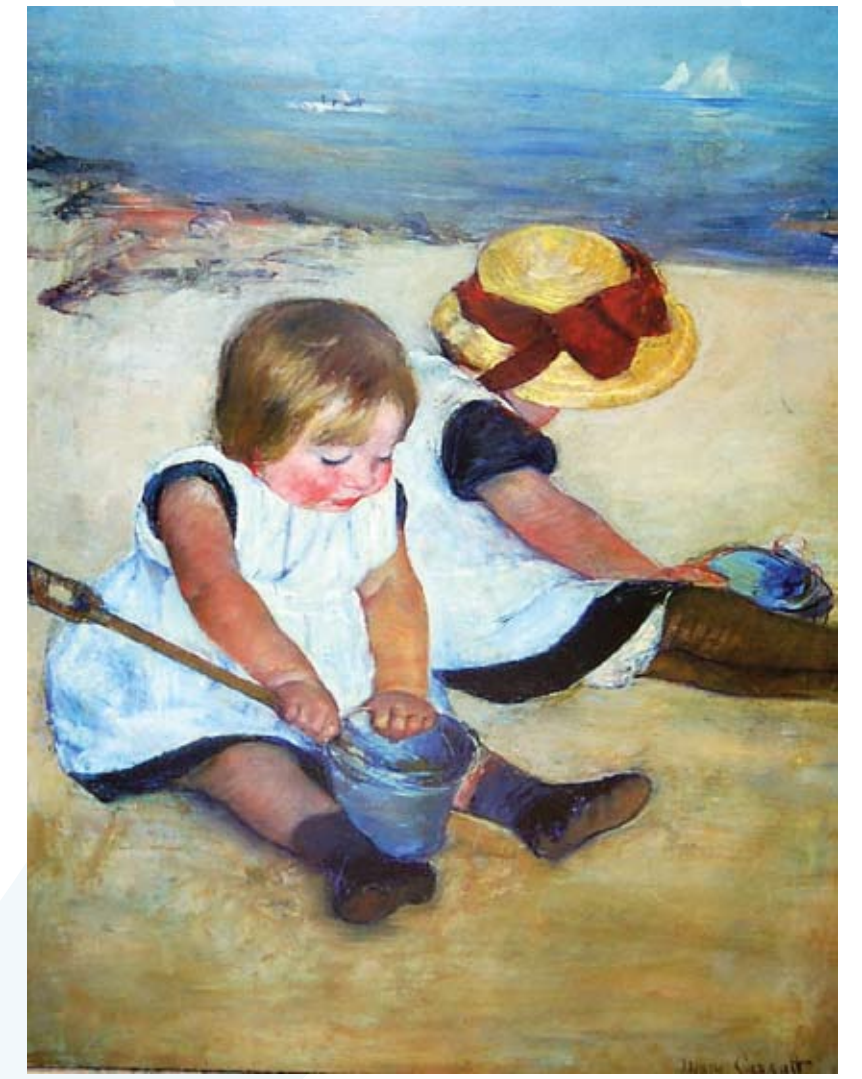
We also introduced them to  
*Elements of art:* Line, Shape,  
Color, texture and value  
*Principals:* Balance, rhythm  
and space

### ... at Play

We created

People at Play  
Clay Sculptures

Techniques used to  
show movement



*Children playing on the beach*  
by Cassatt

### ... and Animals

We did Imaginary Animals in Tempura



*Girl with a Cat*  
by Renoir

We also introduced them to balance.

*Symmetrical (formal):* balance means  
that both sides of a design are the  
same or similar. *Asymmetrical*

*(informal):* both sides look equally  
important even if they are different.

*Harmony:* Art elements combined to  
create an orderly whole; the working  
together of all elements; unity of  
color, shape, line and texture.

### ... and Music

We drew to the Rhythm of the Music



*Two Girls at the Piano*  
by Renoir

We also introduced them to  
*Highlight:* Part of a painting  
where light is represented as  
being brighter than the rest.  
*Rhythm:* A pattern, repetition  
of any of the elements of design.

### ... at Work

We made a Composition to show  
Distance in pencil



We also introduced them to  
*Elements of art:* Line, shape,  
color, texture and value  
*Principals:* Balance, rhythm  
and space

*The Flower Vendor*  
by Rivera

## 3rd Grade Art Vista

### Set A

[Feelings Art Project](#)

[Feelings Lesson Plan](#)

### Images

[Christina's World](#)

[Shrimp Girl](#)

[The Banjo Lesson](#)

[The Cradle](#)

[The Scream](#)

[The Tragedy](#)

### Set B

[People At Work Art Project](#)

[People at Work lesson plan](#)

### Images

[Floor Scrapers](#)

[Portraits in the Office](#)

[The Flower Vendor](#)

[The Gleaners](#)

[The Harvesters](#)

## Set D

[Music Art Project](#)

[Music Lesson Plan](#)

## Images

[Boy with a Lute](#)

[Celebration](#)

[Composition](#)

[Two Girls at the Piano](#)

[Winter Party](#)

## Set E

[Animal Art Project](#)

[Animal Lesson Plan](#)

## Images

[Child with a Dove](#)

[Fur Traders](#)

[Peaceable Kingdom](#)

[Prairie Fire](#)

[Woman with a Cat](#)

Set F

[World Art Project](#)

[World Lesson Plan](#)

Images

[Ohashi Bridge in Rain](#)

[Russian Bridges](#)

[When Do You Marry?](#)