

Kindergarten

Art Vistas introduces students to fine prints on the subjects of

Trains

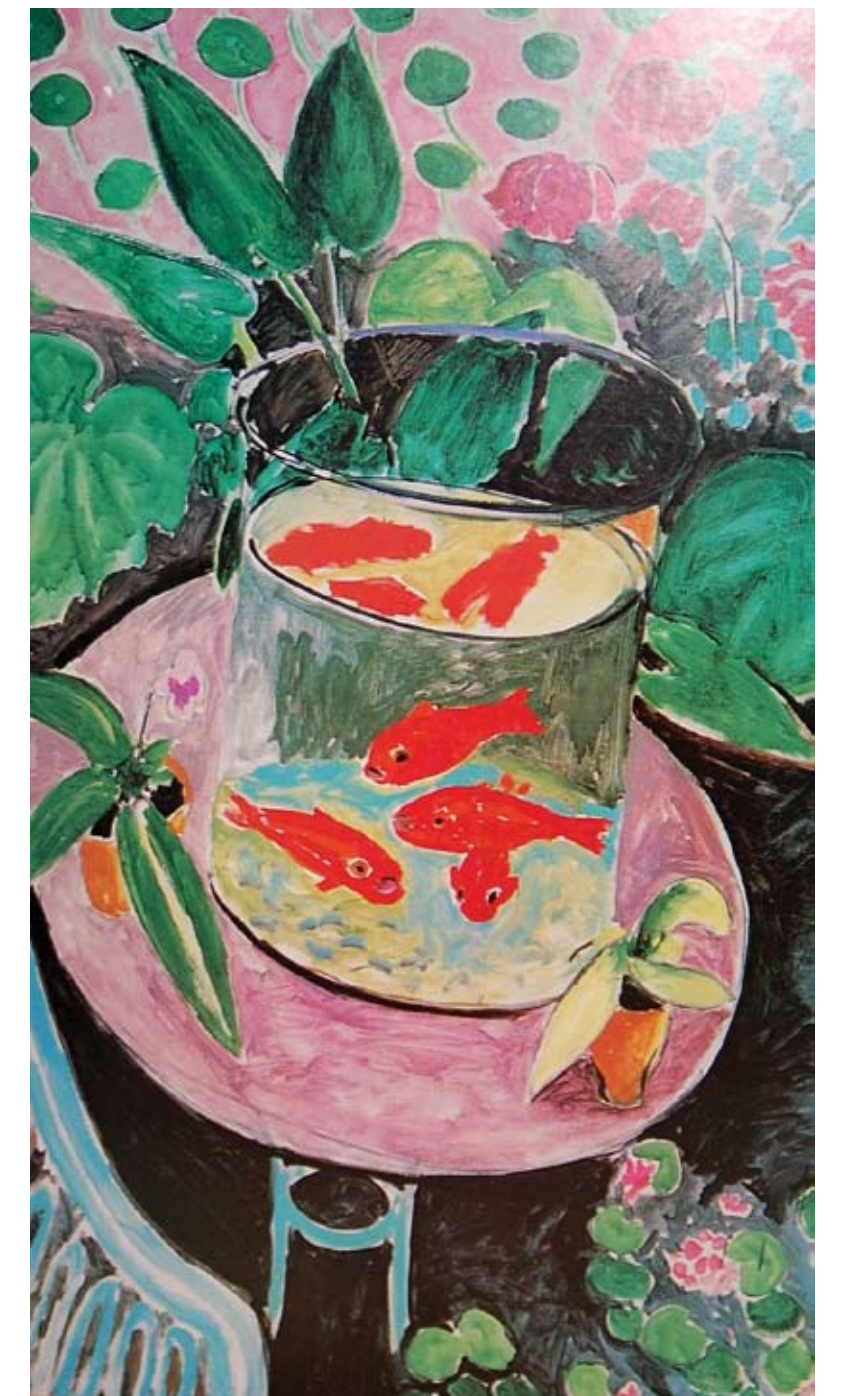
We created Train Collages



American Express Train
by Currier & Ives

Animals

We sculpted
Clay Animals



Goldfish by Matisse

Boats

We stamped Fish prints



Boston Harbor by Fitzhugh Lan

Horses

We made
Crayon Resist
paintings



Mares and Foals
by Stubbs



Girl with Watering Can
by Renoir

Portraits

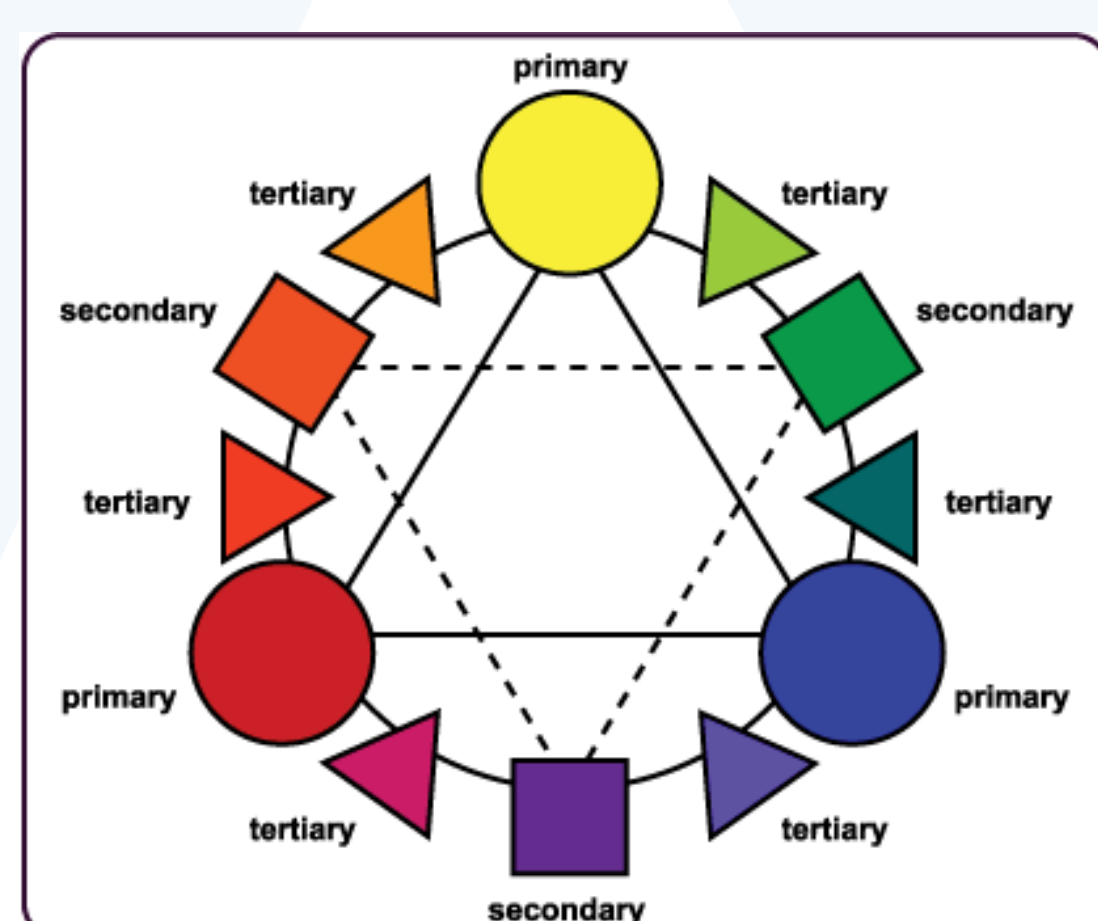
We drew Portraits
in crayon

Houses

We drew
Imaginary Houses
with Oil Pastels



Sugaring Off by Anna Mary Robertson



We also introduced them to *Color*: Hue, primary, secondary, warm and cool (image color wheel)
Lines: Horizontal (lying down; restful), vertical (up and down; shows strength) and diagonal (shows movement)
Shapes: Natural, man-made, geometric and free-form. Foreground, middle ground and background

Kinder Art Vistas

A - Train Collages

[Train Collage Project](#)

[Train Collage Lesson Plan](#)

B- Animals

[Animal Lesson Plan](#)

[Clay Animal Art Project](#)

C - Horses

[Horse Lesson Plan](#)

[Horse Art Project](#)

D- Boats

[Boat Lesson Plan](#)

[Fish Prints Art Project](#)

E - Houses

[House Lesson Plan](#)

[House Art Project](#)